



90 L 20/50/1 S  
90 L 20/200/1 S

# 61 001  
# 61 002



# OPERATION MANUAL

CONTENTS	Seite
1. Safety Instructions	2
2. General advice	3
3. Technical data	3
4. Description	3
5. Assembling / Installation	3
6. Spare parts and accessories	4
7. Operation	4
8. Maintenance and trouble shooting	4
9. Disposal	4
10. Warranty	4

1.

## 1. Safety instructios



**Please observe:** This operation manual contains all necessary information. Please read carefully to avoid damages and faults. All Rapid pieces of equipment are checked carefully before delivery for their perfect composition and function. In case of improper use all rights to claim under guarantee are void.



Make sure that only skilled staff is working with this device in order to prevent damages and accidents caused by improper use.



Environmental conditions i.e. humidity, low temperatures, sunlight and contamination may damage device.



Before using the device make sure that it is not contaminated to prevent any injury. Avoid any contamination of device as well as of environment. In case of any contamination during operation of device take care that it is immediately and professionally removed.



Always wear safety cloths respecting the applicable regulations for accident prevention



Only use this device conforming to its purpose and function. Improper use can cause severe injuries.



Caution – moving parts, sharp edges, hot machine parts or exhausting steam can cause severe injuries.



Before use always check the device for damages and leaks. In case of any damage or leak make sure that it is repaired professionally before use. Operation of defect device may cause severe injuries.



In case of any sign of damage or malfunction during operation of device stop device immediately to prevent injuries. Before next use make sure that the device professionally repaired.



Take care that in case of an accident all emergency measures are on hand

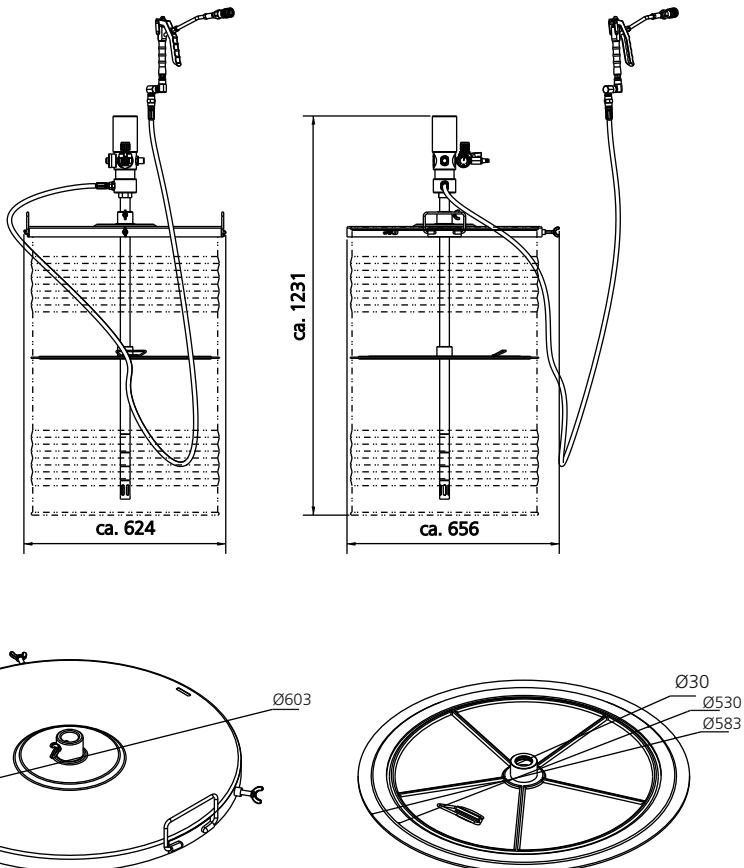
## 2. General advice

- 2.1. During periods of shut-down or working breaks close stopcock of air at the pump to avoid unintentional supply in case of leak within the main or leaking hose.
- 2.2. In case of permanent installed grease main it is recommended to built in a security valve
- 2.3. Pumps and all following parts of unit have an operation pressure of 400 bar . Never turn the grease pistols towards people, danger of injuries.
- 2.4. For pipe and hose reels mains only use material suitable to bear 400 bar pressure.

## 3. Technical data

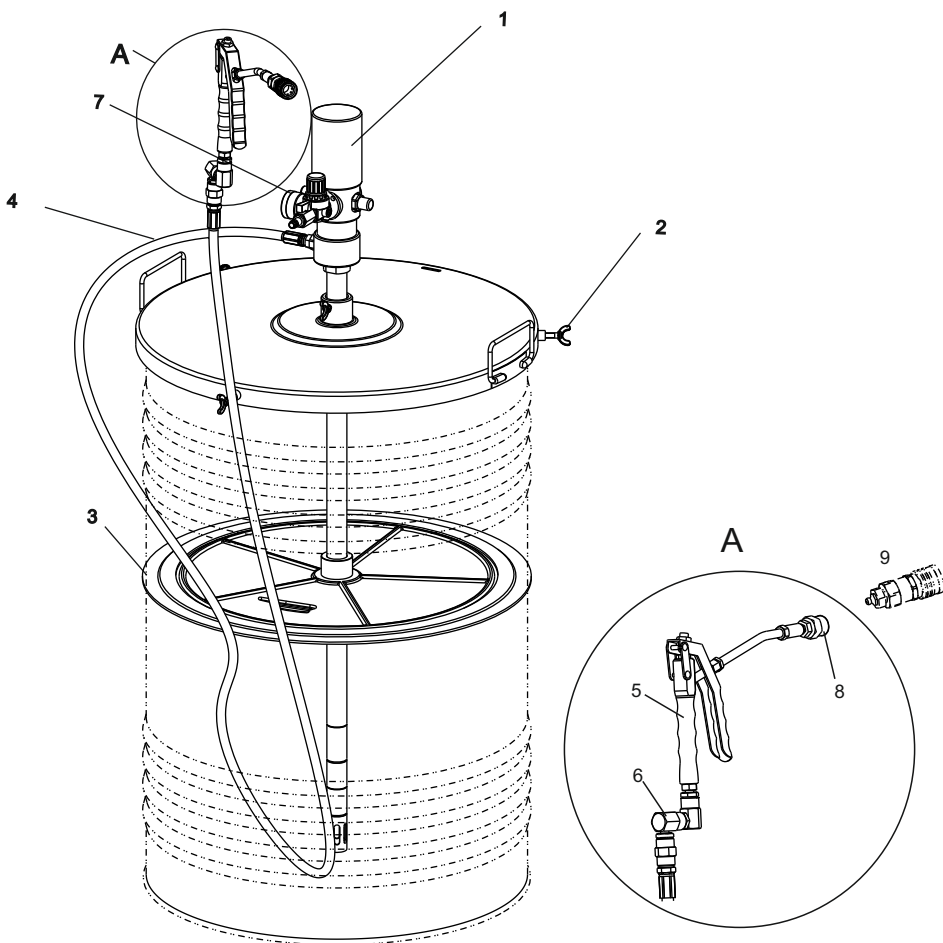
Übersetzung	: 1:50	Gewinde Luftanschluss : G 1/4" iG
Fettauslass	: G 1/4" aG	Gebindegröße : 200 kg
Max. Förderdruck	: 400 bar	Luftdruck min. / max. : 5-8 bar
Lautstärke	: ca. 82 dB	Gewicht : ca. 40 kg
Fettklasse	: NLGI 000 bis NLGI 2	

## 4. Description

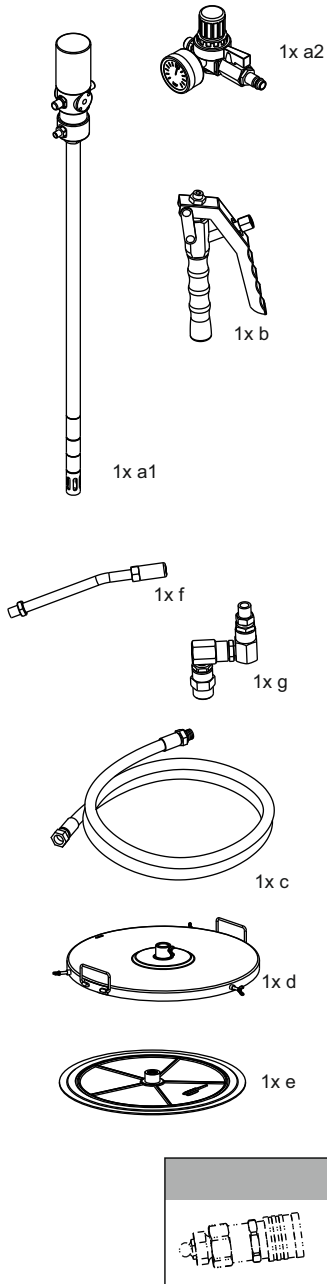


## 5. Spare parts and accessories

Pos.	Description	Art. Nr.
1	Grease pump 90L20/200/1	60 003
2	Grease cover FFD 200	60 536
3	Grease follower plate FFP 200	60 517
4	Flexible grease FVS 04.06	60 505
5	Grease gun P 77	60 501
6	Tripple turning swivel joint grease FDG 06	60 500
7	Air inlet and pressure reducer D/M06	20 506
8	Nozzle KU 100-0	60 518
9	ZSA-coupling ZSA/A	60 537

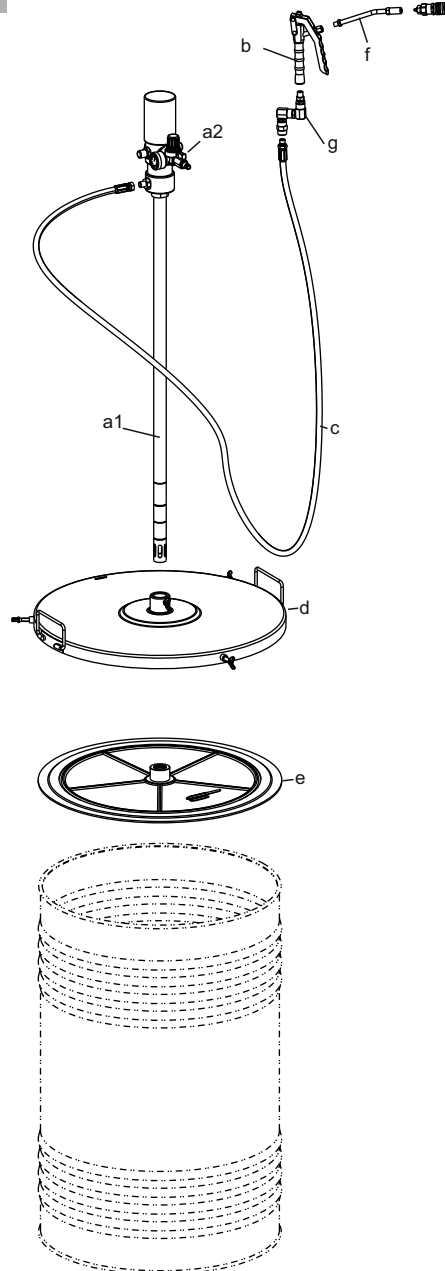


## 6. Montage



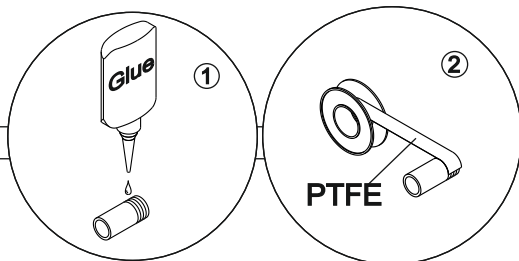
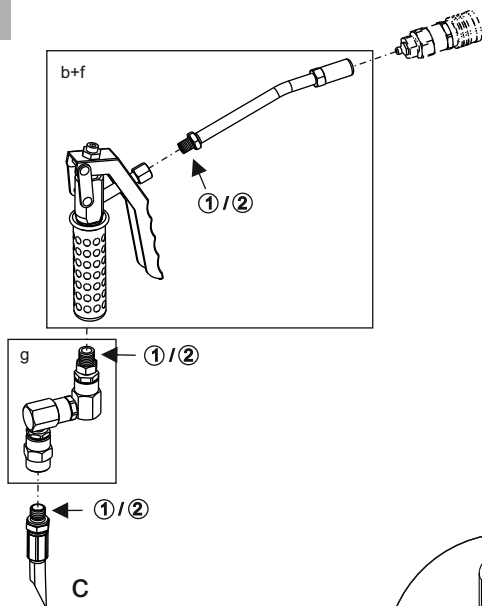
1

Art.Nr. 60 537

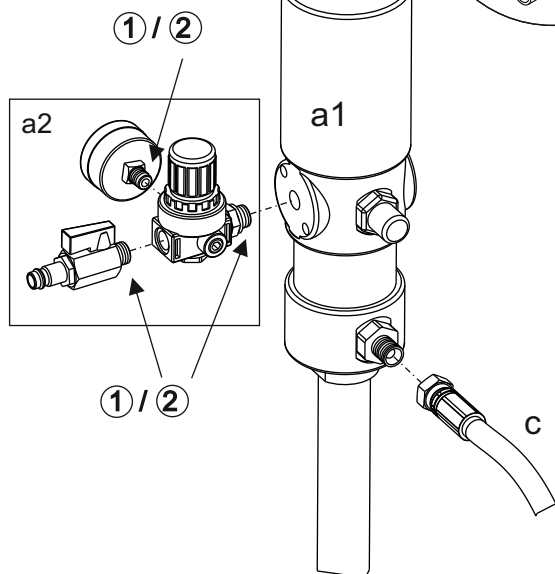


2

Art.Nr. 60 537

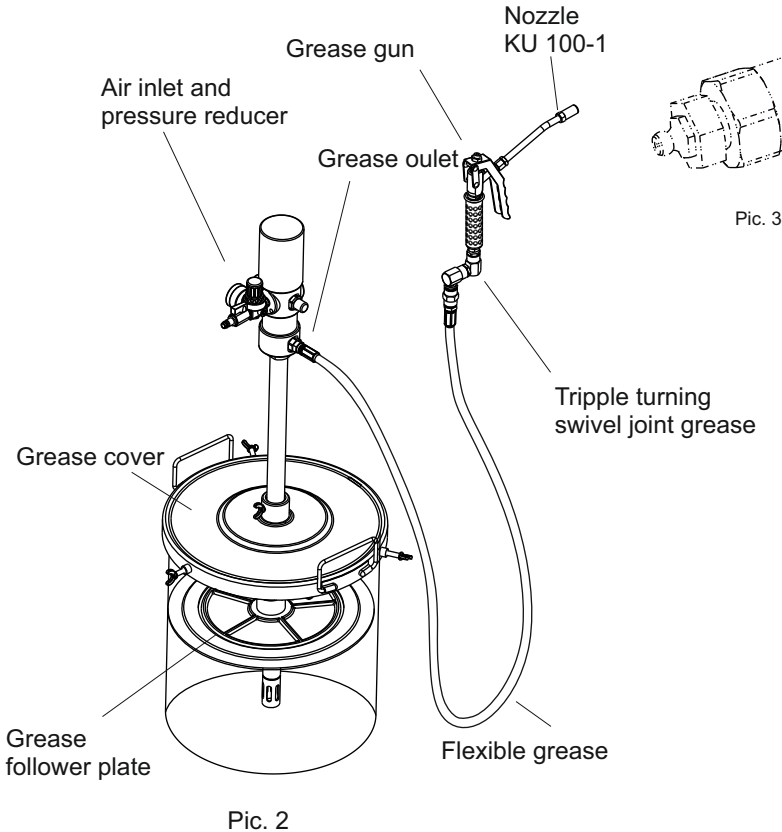


3



## 7. Operation

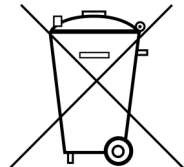
- 7.1. Connect the pump to the compressed air main. Pump starts running. Keep grease pistol open until grease flows without splashing.
- 7.2. For lubricating slip hydraulic nozzle on the grease nipple and operate grease pistol.
- 7.3. **For filling** central lubrication systems connect the optional available ZSA adapter, ref-no. 60 537, picture 3, to the counterpart at the central lubrication system. Proceed like 7.2.
- 7.4. **After operation is finished**, disconnect the pump from compressed air. By opening the grease rest pressure can be release.



## 8. Maintenance and trouble shooting

- 8.1. Before every use all parts of the unit which are getting in contact with the medium, pump, hose and grease pistol have to be checked carefully if there are leaks or damages and if so eliminated.
- 8.2. Refill maintenance unit regularly with suitable oil.

Defect	Problem	Trouble shooting
Pump doesn't prime	Dust trap too dirty	Clean dust trap at suction port
	Air within the pump body	Ventilate pump
Delivery rate too low	Dust trap too dirty	Clean dust trap at suction port
	Grease temperature more than 18°C	Let grease cooling
Air in delivery	Leakage	Remove leakage
	Pump draws Air	Refil grease Make sure that the suction port is insert to the grease
Pump is running but no delivery	Empty grease barrel	Change barrel or refill
	Pump draws Air	Make shure that the suction port is insert into to the grease
	Grease follower plate too small	Use suitable grease follower plate
	Grease follower plate defect	Replace grease follower plate



## 9. Disposal

All damaged parts or pollutants as a result of maintenance or repair must be disposed according to local laws and regulations.

## YOUR CONTRIBUTION TO PROTECT THE ENVIRONMENT

The pertinent regulations for the registration, setting up and operation of equipment for dealing with materials hazardous to water must always be complied with by the user.

## 10. Warranty

10.1 In case of insufficient maintenance, faults on operation, use of not adequate spare parts or attachments all

liabilities and rights of claim under guarantee are void.

10.2 The manufacturer is not liable for improper use of the container or ignoring the safety instructions.

10.3 Technical modifications are subject to change without announcement.