



AOS 1004/3 # 51 014

AOS 1005/3 # 51 017



AOS 1004/3



AOS 1005/3



OPERATION MANUAL

CONTENTS	Seite
1. Safety Instructions	2
2. General advice	3
3. Technical data	3
4. Description	3
5. Assembling / Installation	3
6. Spare parts and accessories	4
7. Operation	4
8. Maintenance and trouble shooting	4
9. Disposal	4
10. Warranty	4

1.

1. Safety instructions



Please observe: This operation manual contains all necessary information. Please read carefully to avoid damages and faults. All Rapid pieces of equipment are checked carefully before delivery for their perfect composition and function. In case of improper use all rights to claim under guarantee are void.



Make sure that only skilled staff is working with this device in order to prevent damages and accidents caused by improper use.



Environmental conditions i.e. humidity, low temperatures, sunlight and contamination may damage device.



Before using the device make sure that it is not contaminated to prevent any injury. Avoid any contamination of device as well as of environment. In case of any contamination during operation of device take care that it is immediately and professionally removed.



Always wear safety cloths respecting the applicable regulations for accident prevention



Only use this device conforming to its purpose and function. Improper use can cause severe injuries.



Caution – moving parts, sharp edges, hot machine parts or exhausting steam can cause severe injuries.



Before use always check the device for damages and leaks. In case of any damage or leak make sure that it is repaired professionally before use. Operation of defect device may cause severe injuries.



In case of any sign of damage or malfunction during operation of device stop device immediately to prevent injuries. Before next use make sure that the device professionally repaired.



Take care that in case of an accident all emergency measures are on hand

2. General advice

- 6.1 Only for Waste Oil of known source flash point $>55^{\circ}\text{C}$ formerly dangerous class A III (VbF)
- 6.2 Always put up waste oil container secure, prevent unintentional moving.
- 6.3 Do not fill in water or petrol, paraffin, kerosene or other easy inflammable liquids.
- 6.4 Always dispose your waste oil at the local collection deposit or your oil dealer.
- 6.5 Before collection of waste oil always check how much waste oil is still in the container.
- 6.6 Do not heat the container above the normal inside temperature, keep away from radiant heat or source.
- 6.7 Do not exceed the maximum emptying pressure of 05 bar !

3. Technical data

Model	AOS 1004	AOS 1005
Volume of container (app. Liter)	75	75
Suction capacity (app. Ltr/min) (with 6mm suction probe, oil temp. 80°C)	5	5
Pressure within container max. (bar)	0,6	0,6
weight (ca. kg)	26	28
Dimensions (LxBxH mm)	500x650x930	500x650x1200
Air inlet min. (bar)	6	6

4. Description

The AOS 1004/3 and AOS 1005/3 is a mobile used oil collector with container of 80 liter volume and suction probes. The AOS 1005/3 is also designed with a collection funnel with adjustable height.

5. Assembling / Installation

5.1. Assembling of wheels:

- Insert in the castors into the holders see pic. 1.
- Put the retaining washers over the threaded bolt of the rollers.
- Screw the nuts onto the threaded bolts and tighten it carefully.
- Insert the rollers Pos. 10 to the axle see pic. 2.
- Secure the castors by screwing in the shouldered screw into the threaded hole of the axle.

5.2. Plug in steering bow (Pos. 8) into sleeves of the container and fasten with screws.

See pic. 3.

5.3 Close emptying valve Pos. 12.

5.4. Hang outlet bend of the emptying hose into the hose clip Pos. 15

5.5. Take off plug-in connector, Pos. 17 of plug-in connection, Pos. 13 und screw it into the inlet of collection container.

Only for AOS 1005/3

5.6. Screw collection bowl Pos. 2 onto filling pipe Pos. 5, and seal by Teflon ribbon.

5.7. Plug on the funnel sieve top Pos. 1 to the collection bowl Pos. 2

5.8. Before first use the O-Rings of the plug-in connection have to be oiled.

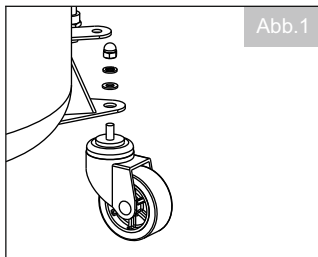


Abb. 1

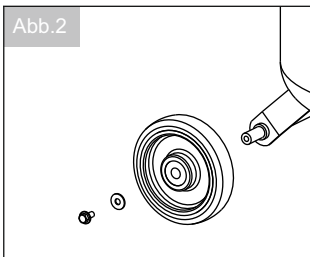


Abb. 2

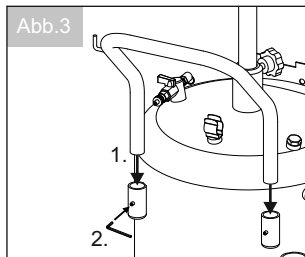
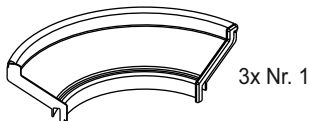
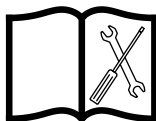
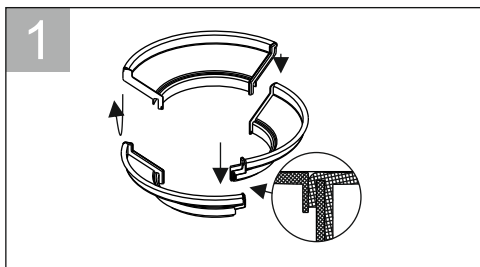


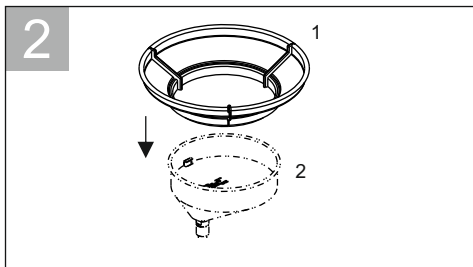
Abb. 3



3x Nr. 1



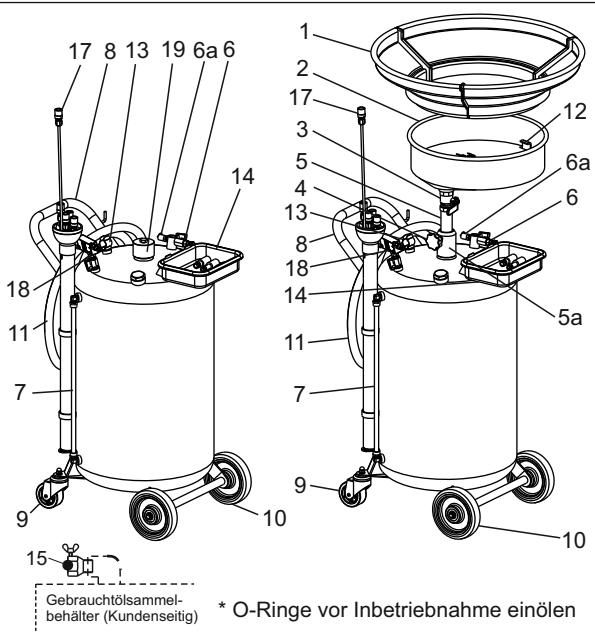
1



2

6. Spare parts and accessories

Pos.	Description	Art.No.
1	Funnel sieve top	50 520
2	Funnel AOT	50 500
3	Filling valve	20 562
4	Clamp screw	50 513
5	Filling pipe	50 514
5a	Sealing set DS EFR	50 523
6	Air inlet	50 524
6a	Relief valva	50 525
7	Level indicator FA	50 518
8	Steering bow	50 526
9	Caster ÖLR/3	50 529
10	Solid rubber wheel KRG/3	50 528
11	Emptying hose SAS	51 520
12	Funnel sieve	50 519
13	Hose clamp	50 527
14	Box for consumables KTS	50 521
15	Plug-in connector	51 517
16	Sealing set DS DCA	51 527
17	Suction probe / adapter	51 500
18	Vacuum generator	51 509
19	Cap	



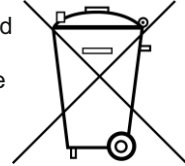
15

Gebrauchtsölsammelbehälter (Kundenseitig)

* O-Ringe vor Inbetriebnahme einölen

7. Operation

- 7.1.1 Suction by suction probes – oil temperature 80° C at minimum
Close ball cocks Pos. 3 and Pos. 12. Connect compressed air to suction nozzle Pos. 16 and open ball cock Pos.6. **The fizzling noise coming out is normal.**
Plug in the suitable suction probe to connection Pos. 13, insert into the dip stick guidance pipe until the deepest place of oil pan is reached and open ball cock Pos. 12.
- 7.1.2 Collection with funnel (only AOS 1005/2) Open all ball cocks Pos. 3 + 6, move funnel as near as possible to the oil drain screw and secure by clamp screw Pos. 4. Now the waste oil run into the funnel and then into the container. After the operation is finished close all ball cocks again.
- 7.2. Emptying
- 7.2.1 Place the unit besides the waste oil collection tank. Push down the collection pan as far as possible and secure with clamping screws Pos. 4
- 7.2.2 CAUTION! It is indispensable to close the filling vale Pos. 3 and the air inlet valve Pos. 6.
- 7.2.3 Insert male adapter Pos. 13 into the female adapter Pos: 17 and
- 7.2.4 Open emptying valve Pos 12 .
- 7.2.5 Establish a compressed air connection to Pos. 6 by using a tyre container with 0,5 bar. Container is emptying.
- 7.2.6 After the container is empty disconnect the compressed air and within the container completely leaking out of the container.
- 7.2.7 Hang plug-in connector Pos. 13 into hose clamp Pos. 15.
- 7.2.8 Close drain valve Pos. 12.



8. Maintenance and trouble shooting

- 8.1 Before every use all parts of the unit which are getting in contact with the medium have to be checked carefully for leaks or damages and if so eliminate.
- 8.2 In case of spilled waste oil pick it up with suitable means and remove it properly. No waste oil may pollute soil or sewerage system.
- 8.3 If oil is leaking at the vacuum nozzle Pos 11 the container is overfilled.
- 8.4 If necessary inside of container can be cleaned by filling in and emptying of Diesel.

9. Disposal

- 9.1 Completely empty all parts of the equipment (hoses, pumps , tanks , etc) and given case blown out with air .
- 9.2 dangerous parts of the appliance must be made unusable f.e. perforate pressure vessel , deform hose reels , etc.
- 9.3 rubber , metals, glass ect. must be separated .
Dispose material fractions according to the local laws and regulations .

YOUR CONTRIBUTION TO PROTECT THE ENVIRONMENT

The pertinent regulations for the registration, setting up and operation of equipment for dealing with materials hazardous to water must always be complied with by the user.

10. Warranty

- 10.1 In case of insufficient maintenance, faults on operation, use of not adequate spare parts or attachments all liabilities and rights of claim under guarantee are void.
- 10.2 The manufacturer is not liable for improper use of the container or ignoring the safety instructions.
- 10.3 Technical modifications are subject to change without announcement.

