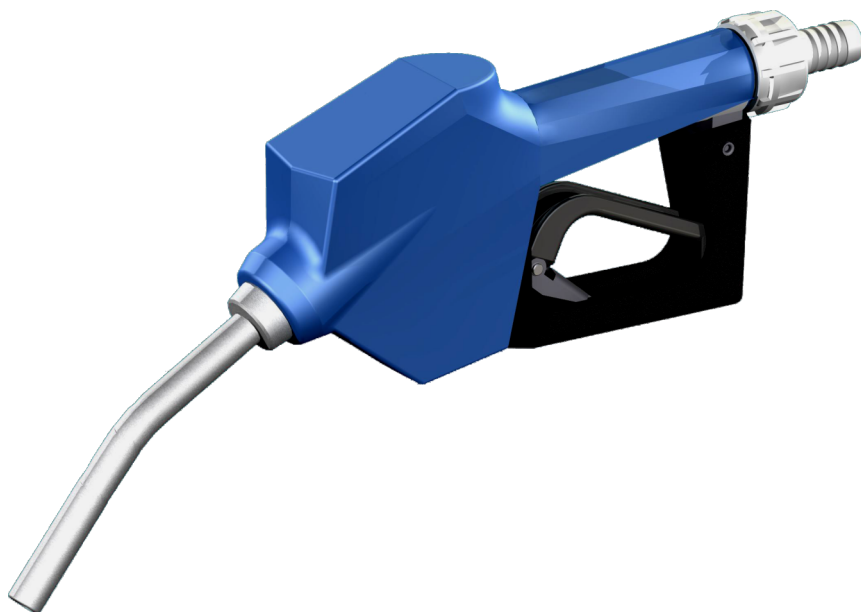




ZPA 15-AB # 28 275



OPERATION MANUAL

CONTENTS	Seite
1. Safety Instructions	2
2. General advice	3
3. Technical data	3
4. Description	3
5. Assembling / Installation	3
6. Spare parts and accessories	4
7. Operation	4
8. Maintenance and trouble shooting	4
9. Disposal	4
10. Warranty	4

1. Safety instructions



Please observe: This operation manual contains all necessary information. Please read carefully to avoid damages and faults. All Rapid pieces of equipment are checked carefully before delivery for their perfect composition and function. In case of improper use all rights to claim under guarantee are void.



Make sure that only skilled staff is working with this device in order to prevent damages and accidents caused by improper use.



Environmental conditions i.e. humidity, low temperatures, sunlight and contamination may damage device.



Before using the device make sure that it is not contaminated to prevent any injury. Avoid any contamination of device as well as of environment. In case of any contamination during operation of device take care that it is immediately and professionally removed.



Always wear safety cloths respecting the applicable regulations for accident prevention



Only use this device conforming to its purpose and function. Improper use can cause severe injuries.



Caution – moving parts, sharp edges, hot machine parts or exhausting steam can cause severe injuries.



Before use always check the device for damages and leaks. In case of any damage or leak make sure that it is repaired professionally before use. Operation of defect device may cause severe injuries.



In case of any sign of damage or malfunction during operation of device stop device immediately to prevent injuries. Before next use make sure that the device professionally repaired.



Take care that in case of an accident all emergency measures are on hand

2. General advice

The liquids compatible with turbine digital meter must be at low viscosity, namely:

- Water/urea solution

Use of other fluids may be inaccurate and can damage the meter

Not suitable when used in a retail sale!

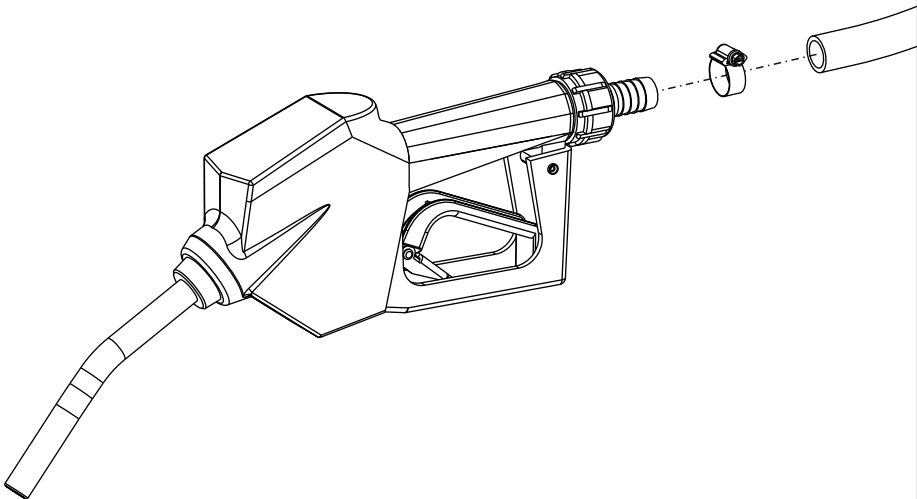
3. Technical data

Medium	Diesel, Adblue, Kerosene, Gasoline
Inlet & outlet	3/4" & DN 15
Working pressure	1,5 bar
Max pressure	6 bar
Flow range	6-10 l/min

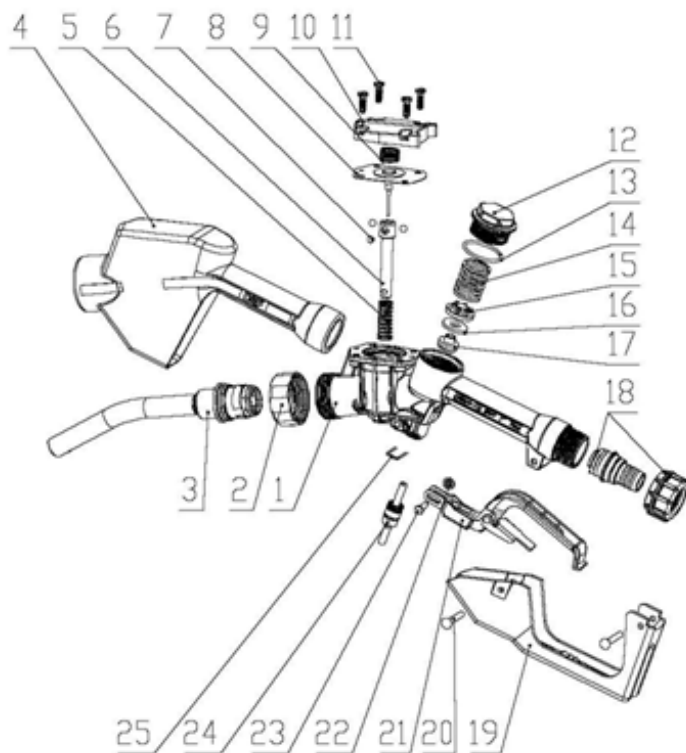
4. Description

The ZPA-AB/Z is an automatic dispensing nozzle without meter.

5. Assembling / Installation



6. Parts and accessories



No.	Description	Q'ty	No.	Description	Q'ty
1	Nozzle body	1	14	Valve spring	1
2	Spout nut	1	15	Valve gland	1
3	Spout	1	16	Valve sealing	1
4	Nozzle cover	1	17	Valve pin	1
5	Spring	1	18	Fitting	1
6	Pin	1	19	Nozzle handle	1
7	Seal ball	3	20	Rivet	2
8	Diaphragm components	1	21	Trigger	1
9	Diaphragm spring	1	22	Snap ring	1
10	Diaphragm gland	2	23	Axis pin	1
11	Screw	4	24	Shaft	1
12	Valve nut	1	25	Clip	1
13	O-Ring 28x2,4	1			

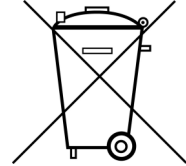
7. Operation

Dispensing:

8. Maintenance and trouble shooting

9. Disposal

- 9.1 Completely empty all parts of the equipment (hoses, pumps , tanks , etc) and given case blown out with air .
- 9.2 Dangerous parts of the appliance must be made unusable f.e. perforate pressure vessel , deform hose reels , etc.
- 9.3 Rubber , metals, glass ect. must be separated .
Dispose material fractions according to the local laws and regulations .



YOUR CONTRIBUTION TO PROTECT THE ENVIRONMENT

The pertinent regulations for the registration, setting up and operation of equipment for dealing with materials hazardous to water must always be complied with by the user.

10. Warranty

- 10.1 In case of insufficient maintenance, faults on operation, use of not adequate spare parts or attachments all liabilities and rights of claim under guarantee are void.
- 10.2 The manufacturer is not liable for improper use of the container or ignoring the safety instructions.
- 10.3 Technical modifications are subject to change without announcement.

